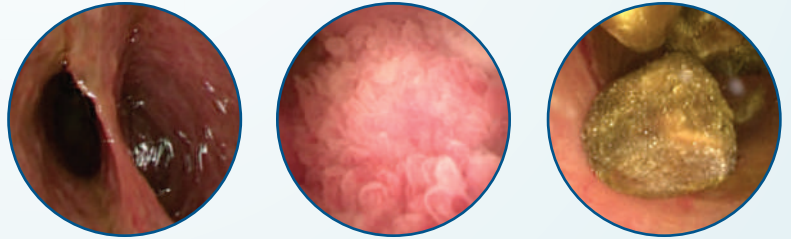




NEXT-GEN VISUALIZATION EYEMAX 650 SERIES SCOPES

Designed for minimally invasive surgical biliary procedures, the 650 series eyeMAX scope provides practitioners with the tools they need for improved efficiency, visualization, and control. With crystal-clear imaging, eyeMAX allows for better diagnostic accuracy and facilitates complex therapeutic interventions. The 650 series eyeMAX scope is offered in two scope sizes: 3.9 mm OD and a 3.2 mm OD to provide the flexibility needed for comprehensive common bile duct exploration and treatment.



SCOPES

Order Number	Insertion Diameter (mm)	Length (cm)	Working Channel Diameter (mm)	Package Units
CD63241	3.9	65	2.0	1/Box
CD63251	3.2	65	1.2	1/Box

DIGITAL CONTROLLER

Order Number	Voltage	Frequency	Functions
SW71212	120V	60Hz	LED, white color balance, brightness, zoom, image shape change

CAN'T FIND IT?

Additional items may be available. Contact us if you can't find what you need.