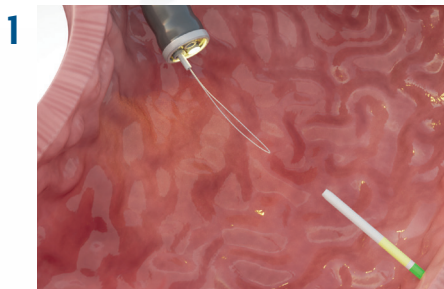
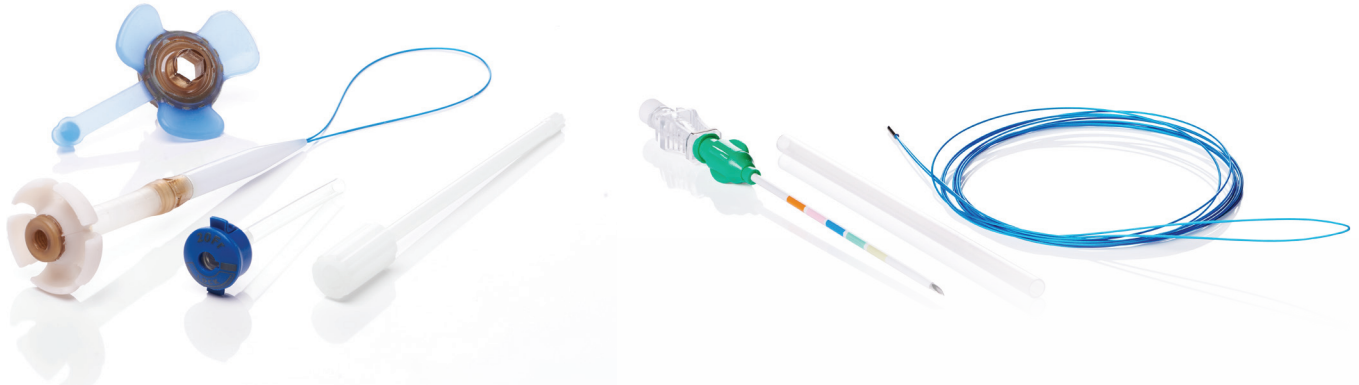
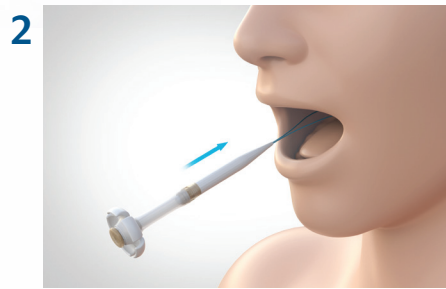


FIDMI MEDICAL PEG TUBE

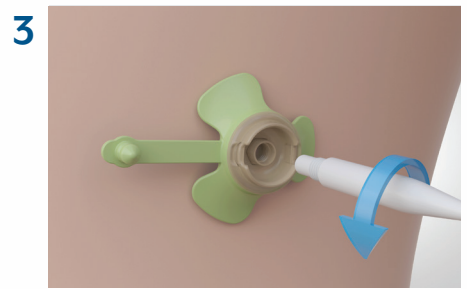
LOW-PROFILE, INITIAL PLACEMENT, PULL TECHNIQUE



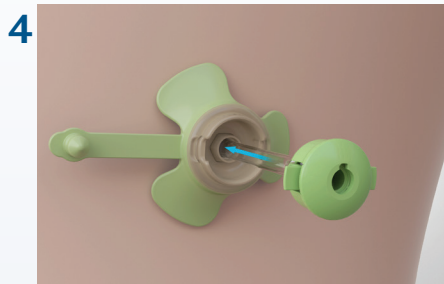
1 Gently push the measuring device flush against the skin – determine the appropriately-sized device according to the color identified endoscopically against the stomach wall. Pass the retrieval wire through the measuring device cannula and grasp the wire with a snare.



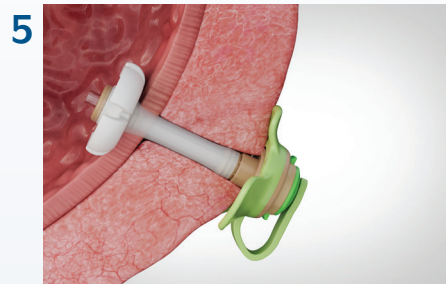
2 Connect the device to the retrieval wire; grasp the opposite end of the wire and gently begin pulling the assembly through the mouth into the stomach and through the created stoma.



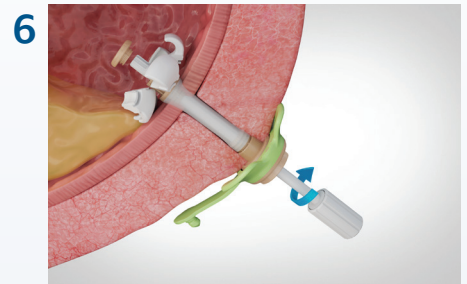
3 Slide the external retaining port over the wire and all the way over the dilator. Hold the retainer against the skin while pulling the wire until an audible click is heard as the retainer snaps into place.



4 Disconnect the dilator by turning counterclockwise. Take the replacement tube of the same color as the bumper, insert it into the port and snap into place.



5 Close the tube cap. To remove or replace the inner tube, firmly squeeze the tube's release buttons and pull it from the port.



6 To remove the PEG system, first remove the replaceable inner feeding tube; place the disassembly tool into the port and rotate counterclockwise. The internal bumper will fall apart within the stomach and be expelled naturally.

This procedure guide is a brief summary and intended for illustrative purposes only. Please refer to the Instructions For Use for complete instructions. Indications, contraindications, warnings and instructions for use can be found in the product labeling supplied with the product.

CAUTION: Federal (USA) law restricts this device to sale by or on the order of a physician.