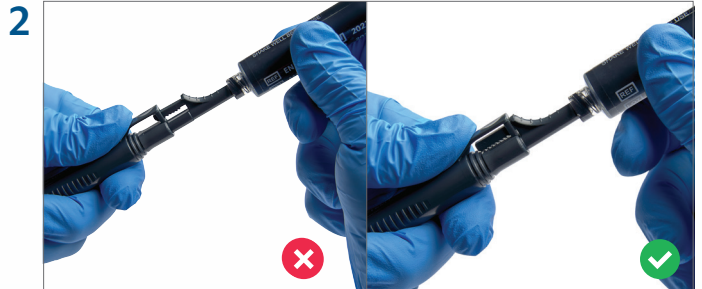


INJECTION NEEDLE

PROCEDURAL STEPS FOR DEPLOYING AND RETRACTING NEEDLE TWO-HANDED OPERATION



1 Attach syringe to the Luer Lock Port at the rear of the handle. Prime needle with solution to remove air, the catheter is transparent so you can see pigmented injectant as it primes. Slowly advance the device into the working channel of the endoscope until the distal end is visible endoscopically. Grip handle as shown above.



2 Grip the syringe and push it toward needle handle until the ratchet thoroughly engages, you will hear several clicks. The needle is only fully engaged when the ratchet attached to the thumb grip is fully seated.

NOTE: The needle tip may extend beyond the tip of the catheter before the ratchet is fully engaged, do not attempt to puncture tissue until it is fully engaged as the needle may "bounce."



3 Advance the needle into the mucosa with a quick forward jabbing motion on the catheter; then perform the injection using the attached syringe.



4 When the injection is completed, depress the Quick Retraction Button. This will release the ratchet and the needle tip will retract back into the sheath. It is now ready to remove from the endoscope.

This procedure guide is a brief summary and intended for illustrative purposes only. Please refer to the Instructions For Use for complete instructions. Indications, contraindications, warnings and instructions for use can be found in the product labeling supplied with the product.

CAUTION: Federal (USA) law restricts this device to sale by or on the order of a physician.